



9TH – 10TH JUNE 2018

MARATHON CLASSES

ROUND 1 - 2018 WORLD OFFSHORE CHAMPIONSHIP AND
THE HARMSWORTH TROPHY

CLASS 3

ROUND 1 - 2018 BRITISH OFFSHORE CHAMPIONSHIP

RACE INSTRUCTIONS

Fortitudo Poole Bay 100 Offshore Powerboat Race

Fortitudo Property Poole Bay 100
Offshore Powerboat Race
Race Instructions

EVENT SPONSOR:

fortitudo

HOSTED BY:



SALTERNS
MARINA

40 Salterns Way, Lilliput, Poole, Dorset, BH14 8JR

ORGANISED BY:



MULTISPARK
— Race Products —

POWERBOAT
— RACING WORLD —



SUNU2
[RACE DIVISION]

Fortitudo Property Poole Bay 100 organised by Moto2017 Ltd, sanctioned by UKOPRA

Fortitudo Property Poole Bay 100
Offshore Powerboat Race
Race Instructions

EVENT TIMETABLE:

SATURDAY JUNE 9 TH

| | | |
|---------------------------|---|---|
| From 14:00 | Salterns Marina | Boats to arrive at Salterns Marina by road or sea. Full details in Race Instructions. |
| From 14:00 – 18:00 | Salterns Marina | Scrutineering |
| From 19:30 | Salterns Hotel Bistro Restaurant & Bar | Informal pre-race get together. |

SUNDAY JUNE 10 TH

| | | |
|---------------------------|--------------------------------|--------------------------------------|
| From 07:00 – 16:00 | Salterns Hotel | Race Administration |
| From 07:00 – 08:45 | Salterns Hotel | Sign In |
| From 07:00 – 08.45 | Salterns Marina | Final Scrutineering |
| 08.45 | Salterns Hotel | Drivers Briefing |
| 09.15 | Salterns Hotel | First Year Licence Holders Briefing. |
| 09:45 | Salterns Hotel | Safety Briefing |
| 12:00 | Start Line – Race Instructions | Race 1 Start |
| 12:15 | Start Line – Race Instructions | Race 2 Start |
| 16:00 | Salterns Hotel | Prize Giving |

MULTISPARK
— Race Products —

POWERBOAT
RACING WORLD



SUNUZ
RACE DIVISION

Fortitudo Property Poole Bay 100
Offshore Powerboat Race
Race Instructions

TIDE TIMETABLE:

SATURDAY JUNE 9 TH

| | Low | High | Low | High |
|-----------------------|------------|-------------|------------|-------------|
| Time | 00.24 | 05.10 | 12.40 | 18.10 |
| Depth (Meters) | 1.27 | 1.84 | 1.01 | 1.97 |

SUNDAY JUNE 10 TH

| | Low | High | Low | High |
|-----------------------|------------|-------------|------------|-------------|
| Time | 01.14 | 06.06 | 13.31 | 18.47 |
| Depth (Meters) | 1.12 | 1.91 | 0.90 | 2.05 |



Fortitudo Property Poole Bay 100
Offshore Powerboat Race
Race Instructions

RACE OFFICIALS:

| | |
|-------------------------------------|--------------------|
| Officer of the Day | Simon Wood Power |
| Assistant Officer of the Day | Danielle Strawford |
| Safety Officer | Rob Irvine |
| Deputy Safety Officer | TBA |
| Medical Officer | Dr Brett Rocos |
| Assistant Medical Officers | TBA |
| Race Secretary | Julie Kirkup |
| Chief Scruitineer | Geoff Purves |
| Assistant Scrutineers | TBA |
| Chief Timekeeper | Caroline Cheer |
| Chief Marshall | TBA |



Fortitudo Property Poole Bay 100
Offshore Powerboat Race
Race Instructions

EVENT COMMUNICATIONS:

Please contact John Moore for information regarding this Event:

+44 7932 622841

john@powerboatracingworld.com

Please contact Simon Wood Power for further information regarding these Race Instructions:

+44 7740 900227

simon@supermarinepowerboats.co.uk

Race Day

Safety VHF channel M37 (It is strongly recommended that all Class 3 craft carry a VHF radio, this may be of the handheld type).

Emergency Mobile Telephone Numbers

| | |
|----------------|-----------------|
| OOD | +44 7740 900227 |
| Safety Officer | +44 7741 079111 |



Fortitudo Property Poole Bay 100
Offshore Powerboat Race
Race Instructions

MARATHON COURSES AND PROCEDURES:

Laps

Start Lap D, Lap E, Lap C, Lap C, Lap C.

Distance

Total: 121 NM

Time Limit

3.5 hours

There will be provision for rough weather courses.

Muster Area

An area to the south west of Alum Outfall, counter clockwise around the muster boat; to be described at the briefing.

Start Run

As per UKOPRA rules.

Start Line

An imaginary line of approx. 750 metres wide, between Bournemouth Pier Outfall Buoy and 30 metres North of the Committee Boat.

NB: For the start the Committee boat will be further South, it will then move slightly North to form the lap/ finish line.

Start Procedure

As per UKOPRA rules

During the start run for both races, all race boats should follow the Start Boat forming up in line abreast on the Start Boat's port quarter whilst remaining at least 30 meters behind the Start boat and observing a safe spreading distance of at least 3 meters between boats.

No boat shall run directly behind the stern of the start boat.

A boat that is in the muster area, but is unable to start for any reason must not interfere with the start. Late starters are only permitted within the time limit shown in the relevant Appendix and then only at the discretion of the OOD.

Penalties for infringing the starting procedure are as follows

- | | |
|--|------------------|
| 1. Failing to respect a safety distance of 30 meters behind Start Boat | 3 Minutes |
| 2. Turning in wrong direction during muster | 1 Minute |
| 3. Interference with starting procedure | Disqualification |
| 4. Planing in the muster area | Disqualification |
| 5. Failure to respect a safe spreading distance | 2 Minutes |
| 6. The bow of any boat being in front of the transom of the Start Boat when the green flag is raised | 10 Minutes |
| 7. Passing the wrong side of the start boat | Disqualification |

Lap / Finish Line

Line between Bournemouth Pier Outfall Buoy and 30 Metres North of the Committee Boat, approximately 400 metres wide.



Fortitudo Property Poole Bay 100
Offshore Powerboat Race
Race Instructions

CLASS 3 COURSES AND PROCEDURES:

Laps

Start Lap A, Lap C, Lap C, Lap B, Lap C, Lap B, Lap B

Distance

Total: 71.4 NM

Time Limit

3 hours

There will be provision for rough weather courses.

Muster Area

An area south west of Alum Outfall allowing for the first start Marathon Boats. Muster Anti clockwise.

Start Run

As per UKOPRA rules. All boats to form up in a line on the Port side of the start boat and 30 metres aft.

Start Line

When the fleet is in line the green flag will be dropped some distance West of the Bournemouth Pier line.

Start Procedure

As per UKOPRA rules.

Penalties for infringing the starting procedure are as follows

- | | |
|--|------------------|
| 1. Failing to respect a safety distance of 30 meters behind Start Boat | 3 Minutes |
| 2. Turning in wrong direction during muster | 1 Minute |
| 3. Interference with starting procedure | Disqualification |
| 4. Planing in the muster area | Disqualification |
| 5. Failure to respect a safe spreading distance | 2 Minutes |
| 6. The bow of any boat being in front of the transom of the Start Boat when the green flag is raised | 10 Minutes |
| 7. Passing the wrong side of the start boat | Disqualification |

Lap / Finish Line

Line between Bournemouth Pier Outfall Buoy and 30 Metres North of the Committee Boat, approximately 400 metres wide.

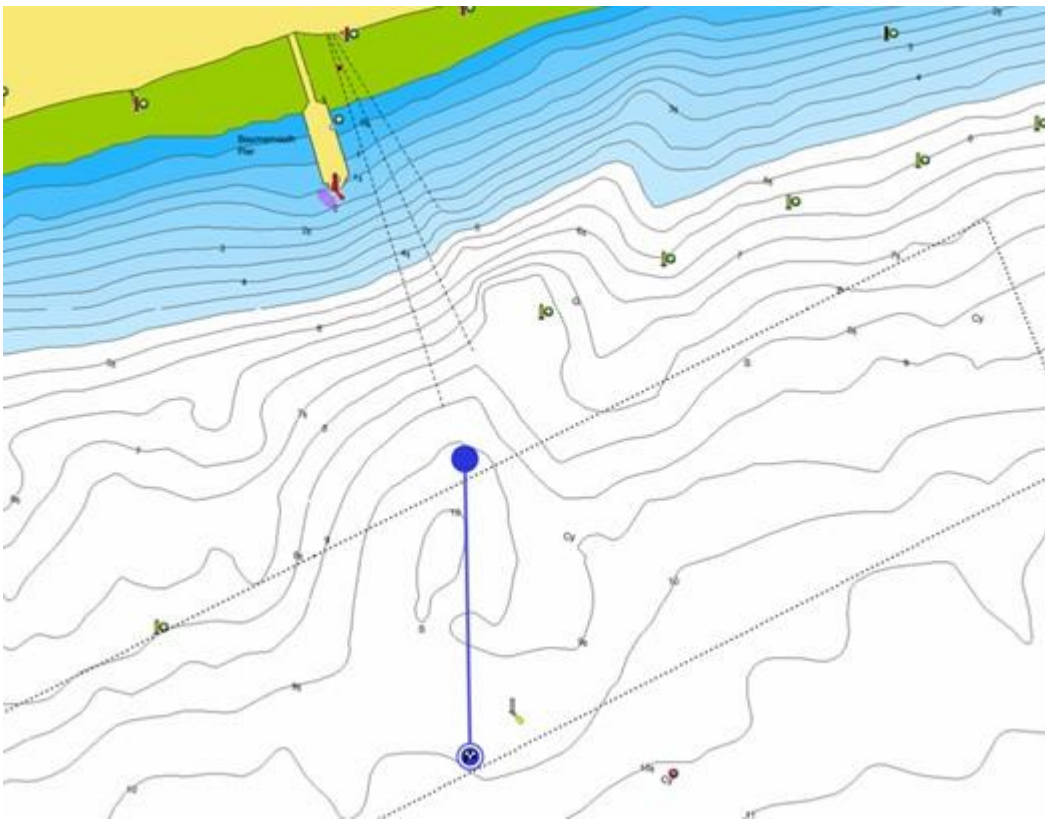


Fortitudo Property Poole Bay 100
Offshore Powerboat Race
Race Instructions

START / LAP LINE:

A line running due South from Bournemouth Pier Yellow Buoy to 30M north of the Committee boat

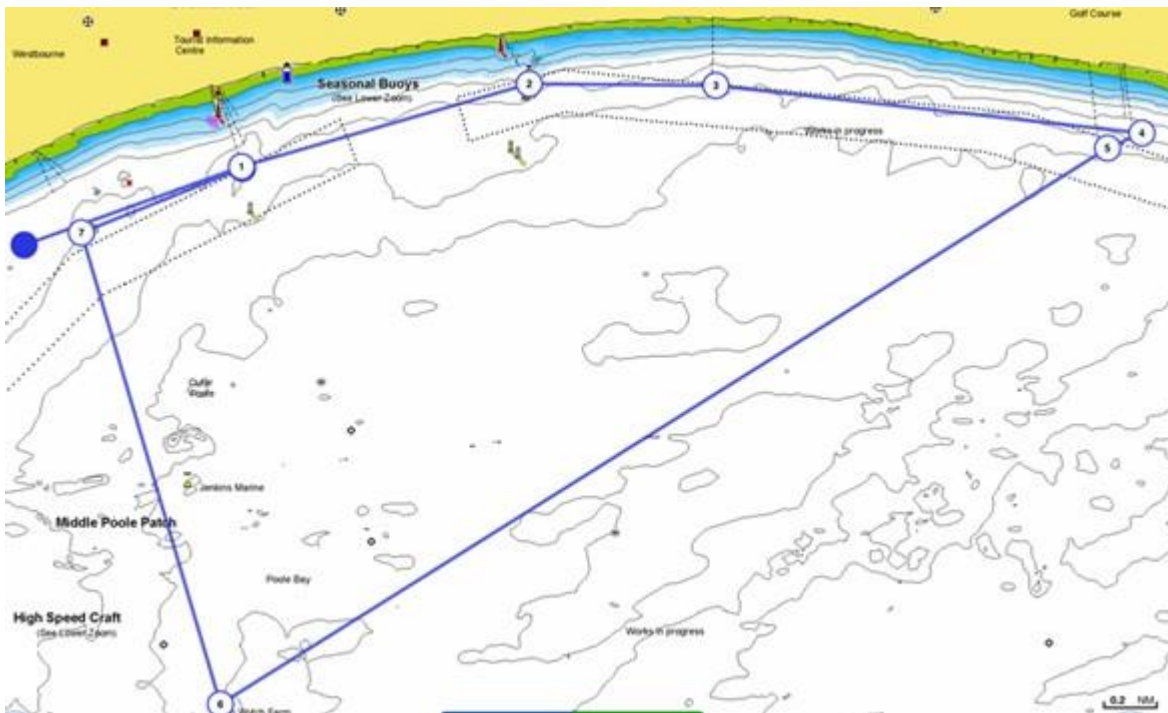
| | | Northerly | Westerly |
|-----------------------|-----------------|-----------|----------|
| Bournemouth Pier Buoy | Yellow Buoy | 50 42 605 | 1 52 303 |
| Committee Boat | To be described | 50 42 338 | 1 52 303 |



Fortitudo Property Poole Bay 100
Offshore Powerboat Race
Race Instructions

START LAP A CLASS 3 (12.30 NM):

| | | | | | |
|-------------|---------------------|-------------|---|-----------|----------|
| Muster Area | W of Alum Outfall | Yellow Can | | 50 42 167 | 1 53 642 |
| Start Line | Bournemouth Pier | Yellow Buoy | P | 50 42 605 | 1 52 303 |
| Mark A | Boscombe Pier | Yellow Buoy | S | 50 42 891 | 1 50 400 |
| Mark B | Southbourne 1 | Yellow Can | S | 50 42 948 | 1 49 121 |
| Mark C | Southbourne 2 | Yellow Can | S | 50 42 747 | 1 46 246 |
| Mark D | Southbourne Outfall | Yellow Can | S | 50 42 679 | 1 46 487 |
| Mark E | Perenco Wytch Farm | Yellow Can | S | 50 40 304 | 1 52 450 |
| Mark F | Alum Outfall Buoy | Yellow Can | S | 50 42 320 | 1 53 401 |
| Lap Line | Bournemouth Pier | Yellow Buoy | P | | |



MULTISPARK
Race Products

POWERBOAT
RACING WORLD

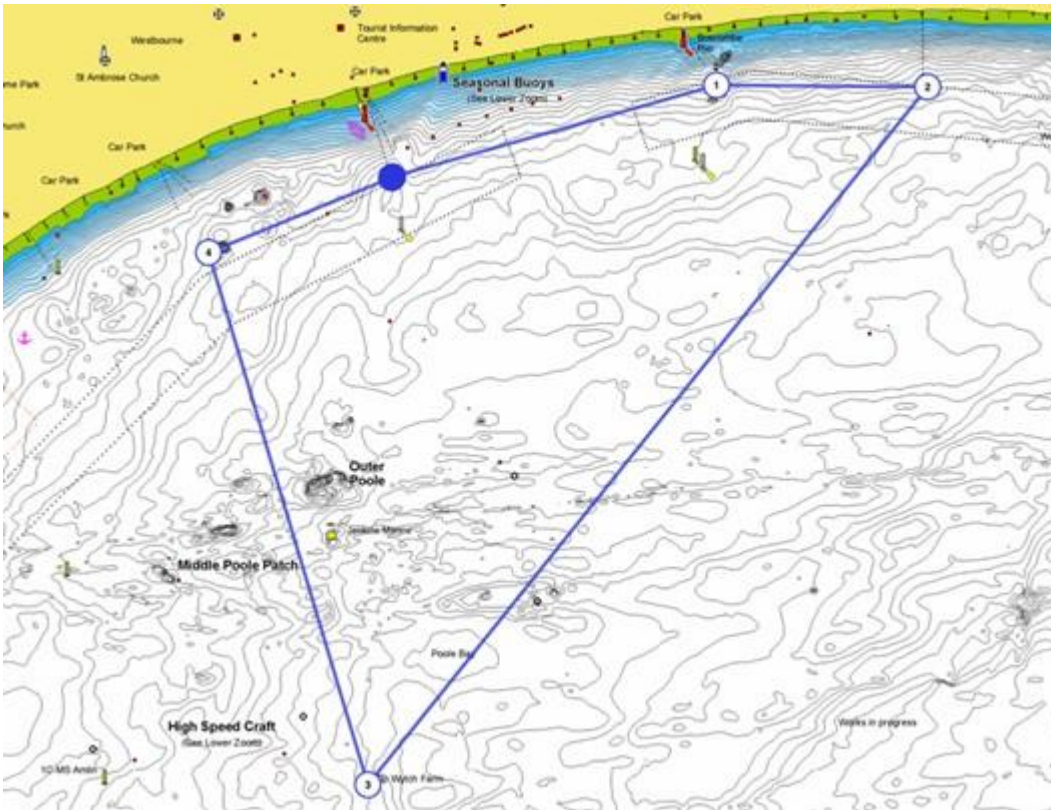


SUNU2
RACE DIVISION

Fortitudo Property Poole Bay 100
Offshore Powerboat Race
Race Instructions

LAP B (8.30 NM):

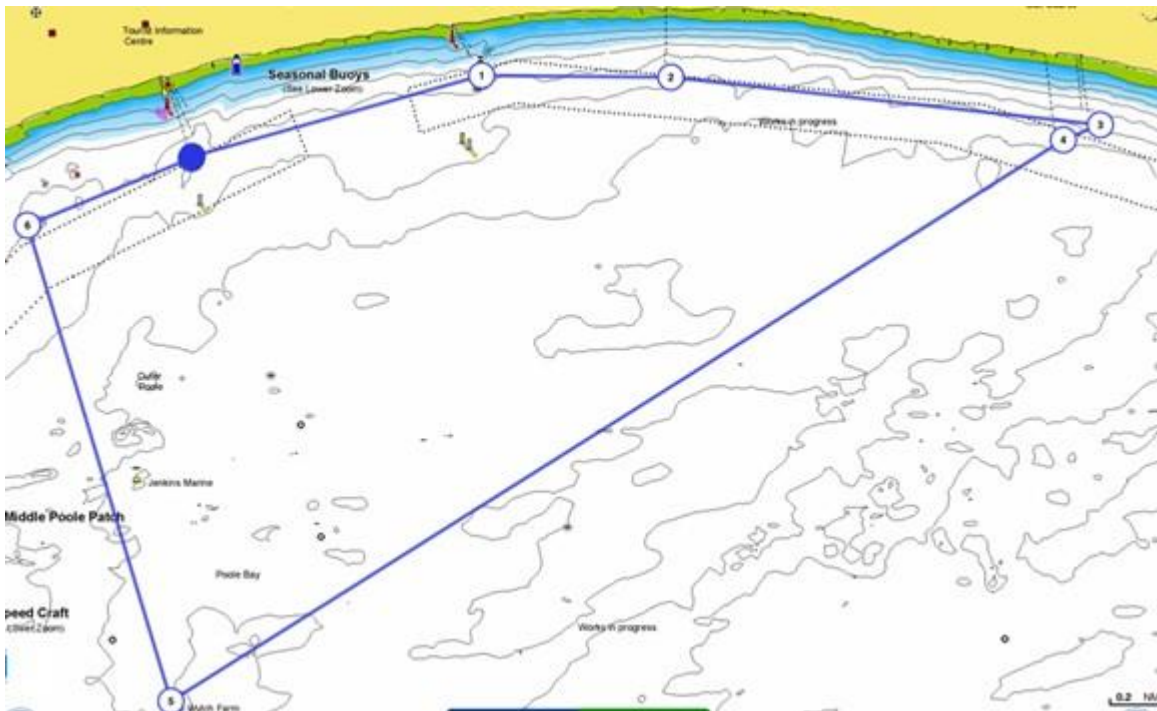
| | | | |
|------------|--------------------|-------------|---|
| Start Line | Bournemouth Pier | Yellow Buoy | P |
| Mark A | Boscombe Pier | Yellow Buoy | S |
| Mark B | Southbourne 1 | Yellow Can | S |
| Mark E | Perenco Wytch Farm | Yellow Can | S |
| Mark F | Alum Outfall Buoy | Yellow Can | S |
| Lap Line | Bournemouth Pier | Yellow Buoy | P |



Fortitudo Property Poole Bay 100
Offshore Powerboat Race
Race Instructions

START LAP C (11.40 NM):

| | | | |
|------------|---------------------|-------------|---|
| Start Line | Bournemouth Pier | Yellow Buoy | P |
| Mark A | Boscombe Pier | Yellow Buoy | S |
| Mark B | Southbourne 1 | Yellow Can | S |
| Mark C | Southbourne 2 | Yellow Can | S |
| Mark D | Southbourne Outfall | Yellow Can | S |
| Mark E | Perenco Wytch Farm | Yellow Can | S |
| Mark F | Alum Outfall Buoy | Yellow Can | S |
| Lap Line | Bournemouth Pier | Yellow Buoy | P |



MULTISPARK
Race Products

POWERBOAT
RACING WORLD

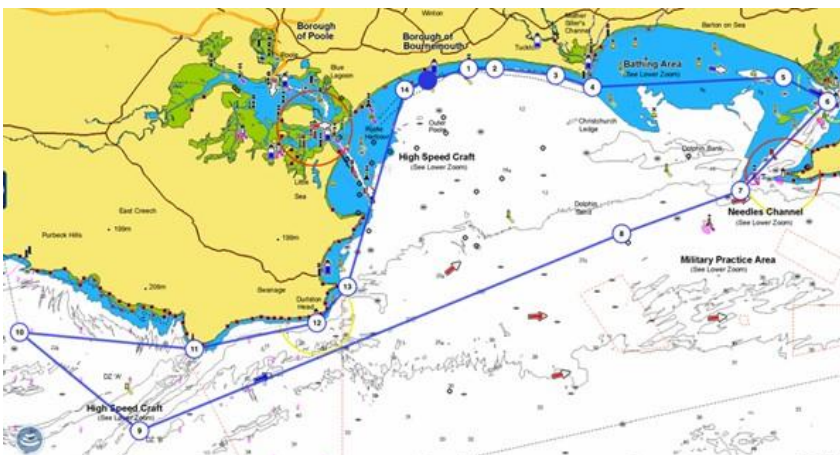


SUNU2
RACE DIVISION

Fortitudo Property Poole Bay 100
Offshore Powerboat Race
Race Instructions

START LAP D MARATHON (58.80 NM):

| | | | | | |
|-------------|--|----------------------------|-------------|-----------|----------|
| Muster Area | W of Poole Rocks | Yellow Buoy | | | |
| Start Line | Bournemouth Pier | Yellow Buoy | P | | |
| Mark A | Boscombe Pier | Yellow Buoy | S | | |
| Mark B | Southbourne 1 | Yellow Can | S | | |
| Mark C | Southbourne 2 | Yellow Can | S | | |
| Mark G | Hengistbury Head | Yellow Can | P | 50 42 385 | 1 44 518 |
| Mark H | North Head | Green Buoy | S | 50 42 691 | 1 35 519 |
| Mark I | North East Shingles | Cardinal Mark | S | 50 41 961 | 1 33 409 |
| Mark J | South West Shingles | Red Buoy | S | 50 39 290 | 1 37 520 |
| Mark K | 3 Buoys | 3 X Yellow Buoys | S | 50 38 010 | 1 43 129 |
| Mark L | DZ B | Yellow Can | S | 50 32 047 | 2 6 013 |
| Mark M | Atomic, (Arish Mell) St Alban's Head Anvil Point | Yellow Can Rock Rock | S P P | 50 35 032 | 2 11 627 |
| Mark N | Peveril Ledge | Red Can | P | 50 36 409 | 1 56 099 |
| Mark F | Alum Outfall Buoy | Yellow Can | S | | |
| Lap Line | Bournemouth Pier | Yellow Can | P | | |



MULTISPARK
Race Products

POWERBOAT
RACING WORLD

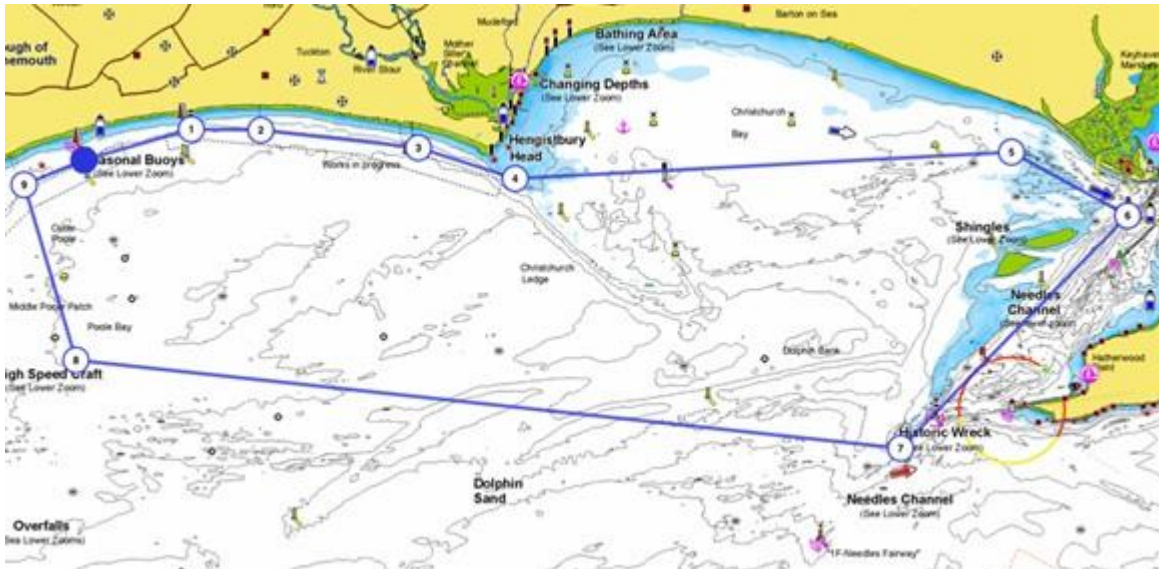


SUNU2
RACE DIVISION

Fortitudo Property Poole Bay 100
Offshore Powerboat Race
Race Instructions

LAP E MARATHON (28.40 NM):

| | | | |
|------------|---------------------|---------------|---|
| Start Line | Bournemouth Pier | Yellow Buoy | P |
| Mark A | Boscombe Pier | Yellow Buoy | S |
| Mark B | Southbourne 1 | Yellow Can | S |
| Mark C | Southbourne 2 | Yellow Can | S |
| Mark G | Hengistbury Head | Yellow Can | P |
| Mark H | North Head | Green Buoy | S |
| Mark I | North East Shingles | Cardinal Mark | S |
| Mark J | South West Shingles | Red Buoy | S |
| Mark E | Perenco Wytch Farm | Yellow Can | S |
| Mark F | Alum Outfall Buoy | Yellow Can | S |
| Lap Line | Bournemouth Pier | Yellow Can | P |



MULTISPARK
Race Products

POWERBOAT
RACING WORLD



SUNUB
RACE DIVISION

Fortitudo Property Poole Bay 100
Offshore Powerboat Race
Race Instructions

COURSE NOTES:

- 1). Off Bournemouth Pier you must not go North of the Yellow Buoy, between it and the pier.
- 2). Off Boscombe Pier, to the North of Mark A there is a Southerly Cardinal mark that guards the surf reef. You may pass either side of this on the first lap but not on subsequent laps. Do be aware of shallower depths in the way of the reef of less than 0.5 metres.
- 3). When lapping/ overtaking smaller boats larger boats are to stay on the outside of the course.
- 4). When turning Marks B, C & D at Southbourne and overtaking, race boats should be aware that the overtaken boat may be taking a different course.
- 5). On the leg from Perenco to Alum Outfall the course crosses Poole Patch, a favourite for local fishermen: fishing boats may be encountered do give them a wide berth.
- 6). High speed ferries may be encountered on the leg from Peveril Ledge to Perenco, do keep a good lookout for them.
- 7). All marks are at least 0.4 NM from the low tide line but do keep a sharp lookout for other water users along the coast and give them a wide berth.
- 8). At Mark F, Alum Outfall ensure that you do not take the corner too far inshore.
- 9). On Lap D of the Marathon course you must pass South of all 3 Buoys at Mark K.

MULTISPARK
— Race Products —

POWERBOAT
— RACING WORLD —



SUNUZ
RACE DIVISION

Fortitudo Property Poole Bay 100
Offshore Powerboat Race
Race Instructions

INFORMATION:

Rules and Regulations:

These races will be run as stated in these Race Instructions, UKOPRA Class rules 2018 and any other instructions issued before or at Drivers' Briefings or in Race Bulletins.

Racing rules can be found at www.ukopra.co.uk

2017 Moto Limited in conjunction with the OOD, Safety Officer and Scrutineers have the right to refuse any boat which they consider unsuitable and/or which does not conform to the requirements of the present Rules.

2017 Moto Limited, the OOD and Safety Officer reserve the right to change these Instructions at any time for safety reasons, provided that any change will be in accordance with the current rules. Any changes will be notified to competitors in a Race Bulletin and, if possible, announced at Drivers' Briefing.

Any infringement of the Rules or of the Race Instructions, or instructions issued at Drivers' Briefings or in race Bulletins may lead to disqualification or other penalties being applied by the OOD and / or 2017 Moto Limited.

Licences:

All competitors will be required to hold an UKOPRA Offshore Powerboat Racing licence.

Licence application forms can be found at www.ukopra.co.uk

All race boats must be registered with UKOPRA who will complete an electronic Logbook.

Competitors not correctly registered will not be allowed to race.

Class rules requiring Immersion Certificates and/or Sea Survival and First Aid must produce valid evidence at Signing On.

Entries:

An online entry can be found at www.ukopra.co.uk with payment details.

Trophies:

Trophies will be awarded to 1st, 2nd and 3rd in each Class.

Class winners will also receive a Fortitudo Property Poole Bay 100 trophy exclusively made for the event by Multispark Race Products.

Competitors Responsibility:

Competitors must read the Risk Statement and Indemnity at the front of these race instructions as well as the safety information at the back.

By signing the race entry form and the official signing on form at the event all competitors must be aware of:

- a). Collision regulations, SOLAS regulations.
- b) Start procedures
- c) Overtaking rules
- d) Flag procedures
- e) Emergency assist procedures
- f) Responsible for the choice and fit of helmet.
- g) The choice and efficiency of a racing vest being the sole responsibility of the wearer.

Competitors are reminded that Safety takes precedence over racing at all times.



Fortitudo Property Poole Bay 100
Offshore Powerboat Race
Race Instructions

INFORMATION (2):

Event Safety Cover:

Safety cover will be provided by the race organisers in accordance with the event risk assessment and safety deployment plan. Full details of safety cover will be given to all competitors at Drivers' Briefing. Safety control will operate from a number of locations. MCA will be informed of the event and kept up to date with race information during the races.

Competitors are reminded that Marathon Class racing is for sea worthy offshore craft capable of undertaking independent extended offshore passages in unprotected waters.

All competitors running boats with cockpit safety cells and restraints are reminded that they are responsible for their own safety and that, in the event of a capsize, their survival depends on their ability to extract themselves from the boat. Limited safety cover at the event may be able to assist, but all crews must accept that this assistance cannot be relied upon and should be considered as secondary to their own capacity for self-extraction.

Timing / Courses:

All boats will be timed from the Race Control vehicle on Bournemouth Cliffs where the Safety Officer will be stationed.

All marks will be observed either from land or sea. Safety Boats will fly a flag to be described at Briefing.

All Marathon competitors using electronic chart plotters should enable the tracking function using settings suitable for recording their track throughout the race at an update rate of no less than one point per minute. In the event of any dispute regarding their correct completion of the course, failure to make this tracking information available to the OOD or Race Jury may reduce the competitor's chance of successfully avoiding a penalty or disqualification.

Retirement:

All competitors are reminded that they must inform the Event Safety Officer or, if this is not possible, a race official as soon as they retire from the race. Competitors are also reminded that, where practical, they must raise their ORANGE FLAG to indicate they have retired from the race. Retiring boats with canopies must turn on their strobe light.

In the event of retirement, boats must report immediately to 'Safety Control' on VHF Channel 37, or by telephone to the Event Safety Officer on +44 7741 079111 or, if possible, to the nearest Safety/Observer boat. When reaching port, they should immediately make contact with Race Administration in person, or by telephone on...., to 'sign off'. Any competitor calling for assistance via recognised distress procedures or from Safety Control will be considered to have retired.

Finishing:

When the leading boat in each race crosses the finish line (as described in the course details) they will be shown the class FINISH FLAG, to be described at Briefing. All following boats in the class will then be flagged as finishers. On receiving the FINISH FLAG, race boats must come off the plane after crossing the above line, and within 100 metres of such. It is not permitted to continue racing after receiving the FINISH FLAG. Boats should then turn to starboard, towards the centre of the course, and proceed towards the Committee Boat where they may be further instructions given.

When it is safe to do so, all race boats should make their way back to Salterns Marina, observing all Harbour speed limits. Any competitor who disobeys instructions from the local authorities will be subject to civil prosecution and may be disqualified.

To qualify as a finisher, competitors have to complete the correct course within the stated time limit, within the rules and in accordance with Race Instructions, Race Bulletins and any further instructions given at Drivers' Briefing.



Fortitudo Property Poole Bay 100
Offshore Powerboat Race
Race Instructions

INFORMATION (3):

Post-Race Declaration:

The Driver or Co-Driver must sign off at race administration as soon as possible after returning to Salterns Marina. Failure to do so within one hour of returning to the Marina may result in exclusion from the results. Protests against another competitor must be lodged by signing off time. All Crew Members must sign off at race administration before the end of the event and collect their race documentation.

Post-Race Scrutineering:

To be classified as a finisher: All crew members must be available with their craft and all relevant mandatory equipment required by class rules for post-race scrutineering if required, up to one hour after the posting of the results. One or more engines may be checked and fuel sampling may take place.

Protest:

There will be a Race Jury, formed from UKOPRA members, in the event of a protest a fee of £250 must be lodged in cash prior to the Protest Hearing.

The Race Jury's decision is full, final and binding.

There is no right of appeal or subsequent redress.

Race Jury:

Chairperson TBA
Jury Members TBA
Notetaker TBA

Race Cancellation:

2017 Moto Limited may cancel or postpone the event or a race at any time in the event of bad weather, equipment failure or otherwise.

The entry fee is not refundable unless specified by 2017 Moto Limited.

Registration:

On arrival to Salterns Marina, all crew members must report immediately to Race Control. Once signed on race boats may not leave Salterns Marina by road or water unless they have permission from the Chief Marshall.

Scrutineering:

Pre-race Scrutineering will take place in the pit area in accordance with class specific rules. Competitors are reminded of the following points:

- 1). Ultimately competitors are responsible for the seaworthiness and condition of their own craft and that they are carrying all equipment required to race within the rules.
- 2). All craft will receive a basic safety check over with random specific checks pre-race.
- 3). Up to the first four boats in each class will be fully post-race scrutineered, failure to comply will result in disqualification from the results and a note in the Boat's Electronic Log Book.
- 4). Prior to racing all competitors are to sign to confirm that their craft comply with minimum class weight limits, craft may be weighed post-race, failure to meet minimum weight may result in disqualification from the results.



Fortitudo Property Poole Bay 100
Offshore Powerboat Race
Race Instructions

INFORMATION (4):

Fuelling Arrangements:

Competitors should arrive at Salterns Marina fully fuelled for Sunday's race. Be aware of the distance from the Marina to the start line and ensure boats have enough fuel to get out, race and return without assistance.

Competitors are reminded that no transfer of fuel is permitted in the pit or launching areas.

All smoking, of any type, is prohibited in the pit and launching areas.

Launching

All boats are encouraged to arrive at Salterns on their bottoms and fully fuelled.

Trailer boats may only launch under the instruction of the Chief Marshal.

Launching will be on a first come first served basis, you may nominate your launching time when signing on using the Launch Request Form.

Boats must have lifting points, eyes and lifting strops.

All boats are allowed one lift in and one lift out.

Practice:

There will be no official practice for this event, however boats wishing to test may do so in the area between Bournemouth and Boscombe piers between 15.00 and 16.00- June 9th.

There will be no water based safety cover and all boats must obey the Poole Harbour Bye Laws when transiting to and from the test area.

Departure and Transit To Muster Area:

At 11.00 hours the Start Boat will leave Salterns Marina, all boats intending to race must leave in a convoy, line astern, behind the start boat, to be followed by the Safety Fleet. The convoy will proceed through Poole Harbour, observing the byelaws for speed and wake. At a suitable point having left the East Looe Channel the Start Boat will release the fleet; you may speed up on the plane when released to proceed to the Muster Area.

Drivers Briefing:

There will be two briefings, the first, full briefing, is compulsory for all competitors, the second is compulsory for all First Year Licence holders.

Signing on will commence 15 minutes prior. All crew must attend the entire briefing and failure to attend the briefing will entail disqualification.

Random Breathalyser and Drug tests may be given, a failure of the test will ensure disqualification from the Event.

Flags:

All flag signals are fully described in the 2018 UKOPRA Offshore Racing Rules where differences occur.

All competitors must have a full understanding of all flag signals. If a competitor fails to acknowledge 2 flags in any one race they will immediately be disqualified.

The finish flags for each class will be described at drivers briefing.



Fortitudo Property Poole Bay 100
Offshore Powerboat Race
Race Instructions

INFORMATION (5):

Noise and Speed Restrictions

Competitors should familiarise themselves with and must obey the local regulations and Bye Laws relating to excessive speed and noise >>

www.phc.co.uk

Any competitor speeding within the Harbour confines will be disqualified.

All competitors are requested to refrain from starting their engines unless absolutely necessary before proceeding to the race.

Penalties

Smoking of any kind, including vaping, in any non-designated area will incur a £50 penalty.

Any driver deemed by the OOD or Safety Officer to be driving in a dangerous or reckless manner will be disqualified from that day's racing with no points awarded and referred to the licensing authority for further training.

Marathon and Class 3 Points scoring

First place – 400 points

Second place – 300 points

Third place – 225 points

Fourth place – 169 points

Fifth place – 127 points (reducing by 25% for each subsequent position).

MULTISPARK
— Race Products —

POWERBOAT
— RACING WORLD —



SUNU2
RACE DIVISION

Fortitudo Property Poole Bay 100
Offshore Powerboat Race
Race Instructions

RISK STATEMENT:

Powerboat Racing is by its nature a dangerous sport and therefore inherently involves an element of risk.

By participating in or becoming involved either as a participant, team member or otherwise individuals agree and acknowledge that:

- (i) they are aware of the inherent risk involved in the sport and accept responsibility for exposing themselves to such inherent risk , including risks to their person, their property, drowning, hypothermia, collision injuries burns and other physical injuries as well as possible death*
- (ii) they have satisfied themselves that they have the necessary skill and knowledge to take part in the event and deal with the conditions that may arise in the course of a race*
- (iii) they will not participate in the event whilst under the undue influence of alcohol, drugs or whilst otherwise unfit to participate*
- (iv) they are responsible for the safety of themselves their crew their boat and their property whether afloat or ashore*
- (v) the management of their boat including insurance is solely their responsibility*
- (vi) scrutineering does not constitute a condition survey of the boat and it is solely their responsibility to decide whether or not to start or to continue in any powerboat race.*
- (vii) ensuring the efficiency and suitability of the helmets and racing vests worn is solely their responsibility*
- (viii) the provision of a race management team, patrol boats and other volunteers by the event organisers does not relieve them of their responsibilities*
- (ix) the provision of patrol boat cover is limited to such assistance particularly in extreme weather conditions as can be practically provided in the circumstances*
- (x) to be bound by the conditions of the Race Entry Form and Racing Instructions*
- (xi) they will accept the decisions of the organising committee and officials nominated by the organising committee.*

INDEMNITY

Participants in the event will be required on signing on to the event to save harmless and keep indemnified:

- (a) The owners of the premises at which the event is held;*
- (b) The organising club and their respective officials, servants and agents; and,*
- (c) The other boat owners, drivers, passengers or mechanics engaged in the meeting , (together with the "Indemnified Parties") AGAINST all actions, claims, costs, expenses and demands in respect of loss of or damage to the property of or personal injury sustained to the Indemnified Parties to the extent caused by the participants, their crew, their boat, their mechanics, support team, representatives or agents.*

THE RESPONSIBILITY TO PARTICIPATE IN THIS RACE IS THE TEAM'S DECISION

